



# STEEL WELLHEADS

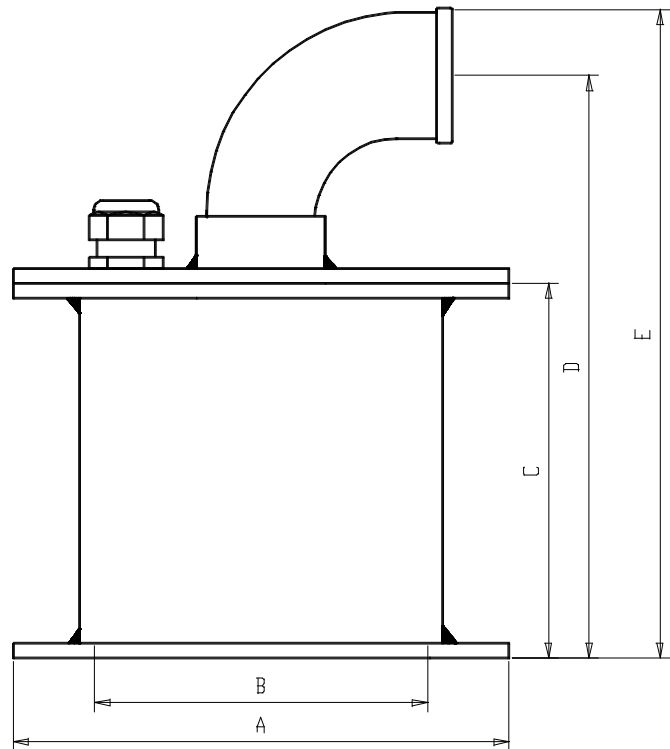


## STANDARD SPECIFICATION

Materials: Mild Steel  
 90 Deg Elbow: Ductile Iron  
 Gland Probe Cable: 12mm ID  
 Gland Materials: Polypropylene  
 Gasket: Rubber  
 Suitable for grouting or bolting

## OPTIONS

Dip tube Sockets  
 Inspection Ports  
 Pressure Gauge  
 Sample Tap  
 Air Valve  
 Flow Meter  
 Non Return Valve  
 Stainless steel bolts  
 WRAS approved Coating  
 WRAS approved Gasket  
 Reducing Bushes  
 Partial / complete stainless steel  
 or PVC construction



SIZE	A	B	C	D	E	WELL CASING DIA.	RM SIZE	GLAND ID	WEIGHT
1½"	265	180	208	310	350	175 OD	1½"	17	20kg
2"	265	180	208	310	350	175 OD	2"	17	20kg
3"	340	222	270	440	495	220 OD	3"	20	35kg

All dimensions in mm unless otherwise shown

Supplied By:



**proquip**  
DIRECT LTD

Park Road Works, 125, Park Road, Beckenham, Kent. BR3 1QJ

tel : 020 8639 0377 fax : 020 8639 0379

e-mail : sales@proquipdirect.com web : www.proquipdirect.com