

**ROTORFLUSH FILTERPUMPS****Models N9316 –N9916****USE AND MAINTENANCE INSTRUCTION MANUAL**

TO BE KEPT BY THE USER

**1. MANUFACTURER AND FILTERPUMP IDENTIFICATION DATA (as per EEC98/37 p. 1.7.4a)****1.1. Manufacturer Data**

Rotorflush Filters  
Langmoor Manor  
Charmouth  
Bridport  
Dorset  
DT6 6BU  
England  
Telephone: +44 (0) 1297 560229  
Fax: +44 (0) 1297 560110  
Email: [mail@rotorflush.com](mailto:mail@rotorflush.com)

**1.2 Filterpump Data**

Description: Submersible Filterpump Models. N9316, N9416, N9516, N9616, N9716, N9816 and N9916

**2. TECHNICAL ASSISTANCE INFORMATION**

If a malfunction of the Filterpump is not covered in the TROUBLESHOOTING table (Section 15) contact Rotorflush Filters at the above address.

**3. INTRODUCTION**

This publication contains all necessary information and instructions for the use and maintenance of your Rotorflush Filterpump.

Follow the advice given to ensure correct operation and optimum performance of the Filterpump. For any other information, please contact Rotorflush Filters

***THESE INSTRUCTIONS AND ILLUSTRATIONS ARE SUBJECT TO COPYRIGHT AND MUST NOT BE COPIED IN WHOLE OR IN PART***

---

**4. CONTENTS**

1. Manufacturer and Machine Identification Data
2. Information on Technical Assistance
3. Introduction
4. Contents
5. General Safety Warnings
  - 5.1. Preventive measures to be taken by the user
  - 5.2. Significant protection and precautions
6. Description
  - 6.1. General description
  - 6.2. Technical and construction features
7. Technical Data Card
  - 7.1. Pump technical data
  - 7.2. Motor technical data
  - 7.3. Filter technical data
8. Contemplated and Non-contemplated Use
  - 8.1. Contemplated conditions of use
  - 8.2. Non-contemplated conditions of use
9. Handling and Transport
  - 9.1. Unpacking
  - 9.2. Handling and De-installing
  - 9.3. Transport
10. Preparations for use
  - 10.1 General information
  - 10.2 Electrical connections
  - 10.3 Checking the Direction of Rotation (3 phase models)
  
11. Installation
  - 11.1 Fixed installation
  - 11.2 Temporary installation
  
12. Assembly and Disassembly
13. Adjusting and registering
14. Use and Startup
  - 14.1 Starting
  - 14.2 Version with Floating switch
  - 14.3 Version without floating switch
  
15. Maintenance and repairs and troubleshooting
16. Technical information
  - 16.1 Dimensions and packing weights
  - 16.2 Diagram for installation minimum distances
  - 16.3 Rating plate example
17. Information on airborne noise
18. Waste disposal

## 5. GENERAL SAFETY WARNINGS

***FAILURE TO OBSERVE THESE WARNINGS AND/OR ANY TAMPERING WITH THE FILTERPUMP EXEMPTS ROTORFLUSH FILTERS FROM ALL RESPONSIBILITY IN THE EVENT OF PERSONAL INJURY OR DAMAGE TO EQUIPMENT OR PROPERTY AND/OR TO THE FILTERPUMP***

Read this manual carefully and check to ensure that the Filterpump has been properly installed and connected in accordance with relevant safety standards before starting the Filterpump.

There are no RESIDUAL RISKS with Rotorflush Filterpumps.

No particular technical skills are required to use Rotorflush Filterpumps.

No personal safety devices (precaution devices) are required to use Rotorflush Filterpumps.

### 5.1. **Preventive Measures to be Taken by the User**



a) The user must specifically comply with all the accident prevention regulations in force in the respective countries in which the Filterpump is being used; the indications given in Section 7 must be scrupulously followed.



b) **During operation make sure that nobody is in the water**  
 c) Before undertaking any repairs or maintenance to the Filterpump, isolate the electricity supply by removing the plug from the socket and/or turning off the switch (if provided). This will prevent accidental starting which could cause personal injury or damage to equipment or property.

d) Any maintenance operation, installation or moving the Filterpump with the electrical system live may cause serious injury and could prove fatal.

e) During operation, avoid moving the Filterpump.

f) Before using the Filterpump, always check that the cable and all electrical devices are in perfect working order.

g) When starting up the Filterpump (by turning on the switch, if provided, or by inserting the plug in the socket) ensure (i) you do not have wet hands (ii) you are not standing in water and (iii) you are not barefoot.

h) The user must not carry out under his/her own initiative any operations or tasks not contemplated in this manual.

### 5.2. **Significant Protection and Precautions**

(as per EEC 98/37 p. 1.1.2 and 1.7.2; EN 292-2 p.5).

Rotorflush Filterpumps are designed so that all moving parts are shrouded by protective casings. Rotorflush Filter declines all responsibility in the event of injury or damage caused as a result of tampering with these devices.



Each lead or live part is electrically insulated to earth; there is also a further safety device in that the accessible conductive parts are connected to an earth lead so that the parts within reach cannot become dangerous in the event of failure of the principal insulation.

## 6. **DESCRIPTION**

### 6.1. **General Description**

Rotorflush N Series Filterpumps are all similar from the functional and constructive point of view; the only differences are the following:

- power
- flow rate
- head
- electric power supply (single phase or three phase)
- weight
- dimensions

Rotorflush Filterpumps are used for handling water containing total suspended solids not greater than 2,000 mg/litre dry weight at temperatures up to 40°C (Section 7.1). Unwanted solids are separated by a self-cleaning filter which is continuously backwashed with filtered water pumped through a dual-headed rotor by a secondary impeller mounted on an extended impeller shaft attached to the pump.

Thanks to their small bulk and ease of transport, they may be used for fixed or temporary installations, with or without automatic start.

Rotorflush Filterpumps are designed for long life and constant performance if used according to the instructions given in Sections 8 and 15.

### 6.2. **Technical and Construction Characteristics**

Rotorflush Filterpumps are designed and built to the following design and construction standards:

Machine 98/037/EEC; EN292 standard

Low Voltage 73/23/EEC and relative additions EN60335-1 and EN 60335-2-41 standards

Electromagnetic Compatibility 89/336/EEC and relative additions EN50081-1 and 2 standards

**7. TECHNICAL DATA CARD** (as per EEC 98/37 p.1.1.2 and 1.7.2; EN 292-2 p.

**7.1 Pump Technical Data**

|                                     |       |  |
|-------------------------------------|-------|--|
| Maximum temperature of pumped fluid | °C    | 40   |
| Maximum immersion depth.....        | m     | = (length of electric cable-2) to a maximum of 20m.  |
| Maximum total head                  | m     | See plate on Filterpump                              |
| Length and type of power cable      | m     | 10 (20) H07 RN-F                                     |
| Maximum working pressure kPa        | (bar) | 1500 (15)  |
| Type of impeller                    |       | Closed   |
| Type of seal on shaft               |       | Duplex seal with oil-lubricated intermediate chamber |
| Type of bearing                     |       | Shielded ball bearing                                |
| Delivery diameter                   |       | Threaded Rp 1 1/4                                    |
| Impeller material                   |       | Stainless steel                                      |
| Stage material                      |       | Stainless steel                                      |
| Diffusers material                  |       | Stainless steel                                      |
| Seal holder material                |       | Stainless steel                                      |

**7.2 Motor Technical Data**

|                             |     |  |
|-----------------------------|-----|--|
| Power                       | kW  | See Plate on Pump  |
| Type                        |     | Dry submerged  |
| Polarity                    | No. | 2  |
| Insulation class            |     | F  |
| Degree of protection        |     | IP68   |
| Type of duty                |     | Continuous   |
| Phase - frequency - voltage |     | See plate on Filterpump  |
|                             |     | See Para 10.1 for voltages and equivalent tolerances                                 |
| Overpower protection        |     | Single phase up to 1.1kW included over 1.1 kW and three phase to be provided by user |
| Capacitor                   |     | External   |
| Motor structure material    |     | Stainless steel  |
| Shaft material              |     | Stainless steel  |

**7.3 Self-cleaning Filter Technical Data**

|                                |  |   |
|--------------------------------|--|---|
| Filter Area                    |  | 474 cm <sup>2</sup>                                     |
| Filter Mesh                    |  | Monofilament polyester either 50,100,200 or 300 microns |
| Materials: Filter cage         |  | stainless steel   |
| Backwash rotor                 |  | Acetal Copolymer  |
| Rotor thrust bearing           |  | Silicon Carbide   |
| Rotor impeller                 |  | AISI304 stainless steel                                 |
| Rotor impeller extension shaft |  | AISI304 stainless steel                                 |
|                                |  |   |

## 8. CONTEMPLATED AND NON-CONTEMPLATED USE

### **WARNING**

Failure to respect the prescribed limits constitutes a situation of use that is technically improper and may endanger the safety of persons and thus EXEMPTS ROTORFLUSH FILTERS FROM ANY RESPONSIBILITY IN THE EVENT OF ACCIDENTS TO PERSONS OR DAMAGE TO EQUIPMENT OR PROPERTY AND/OR TO THE FILTERPUMP, THEREBY RENDERING THE GUARANTEE INVALID.

#### 8.1 **Contemplated Conditions of Use**

Rotorflush Filterpumps are suitable for pumping water, non-aggressive and compatible with materials used to construct the pump. Max density 1.1 kg/dm<sup>3</sup> with a total suspended solids loading not exceeding 2000mg/litre dry weight. Oily/fatty/sticky solids will reduce filter performance. They can be used with pressurisation units. Use the Filterpump in keeping with its technical characteristics (Section 7).

#### 8.2 **Non-Contemplated Conditions of Use**

Rotorflush Filterpumps must not be installed in swimming pools, garden ponds and similar environments where and when people are in the water. For pumping fluids having a total suspended solids loading of more than 2,000 mg/litre dry weight, Rotorflush Filterpumps must never be run without water.

## 9. HANDLING AND TRANSPORT

(as per EEC 98/37 p. 1.7.4.a; EN 292-2 p.5 1.1.a)

### 9.1 **Unpacking**

Check that there are no breakages or severe dents in the packing; if there are, point this out immediately to the person who delivers the material. After removing the Filterpump from the package, check that it has not suffered any damage during transit; if damage is found, inform the dealer within 8 days of delivery. Check that the specifications stated on the plate of the Filterpump are the same as you requested in your order.

### 9.2 **Handling and De-installing**



#### **WARNING**

***FAILURE TO FOLLOW THESE INSTRUCTIONS MAY CAUSE THE FILTERPUMP TO FALL AND SUFFER SEVERE DAMAGE. NEVER UNDER ANY CIRCUMSTANCES USE THE POWER CABLE TO LIFT OR DRAG THE FILTERPUMP.***



To handle or de-install the Filterpump you must:

- remove the plug from the power socket and/or switch off the switch, if provided;
- roll up and hold the electric power cable in your hand;
- lift the Filterpump and the delivery pipe.

If the Filterpump is set up for fixed applications, perform the following operations before handling it:

- remove the plug from the power socket and/or switch off the switch, if provided;
- unscrew any clamps and remove the delivery pipe;
- roll up and hold the electric power cable in your hand;
- lift the Filterpump and the delivery pipe.

### 9.3 **Transport**

The Filterpump is packed in a cardboard box for transport; as its total weight and bulk are not excessive (fig 1), transport presents no difficulties. However, check the gross weight.

## 10. **PREPARATION FOR USE** (as per EEC 98/37 p.1.7.4.a, EN 292-2 p.5.1.3).

### 10.1 General information



Before beginning to work on the electrical pump, make sure that you have disconnected the electricity from the power supply mains and that it cannot be accidentally reconnected.

The voltage variation allowed +/- 5% (single phase 220-240 V, 3-phase 380-415 V)

### 10.2 Electrical Connections



Connections must only be performed by an authorised electrician in compliance with the law in force. Verify that the data on the name plate match the nominal values for the power line. Make the connection after verifying the existence of a working grounding circuit.

It is the installers responsibility to perform the connection in compliance with regulations in force in the country of installation.

Single phase versions will be supplied with an electrical panel that includes a capacitor.

In the single phase versions up to 1.1kW included, the motor is protected against overload by a thermal device (overload cut-out) inserted in the winding.

Single phase 1.5-2.2kW power versions need external protection (bimetal trigger overload cut-out) with intervention time calibrated to:

- Less than 30 minutes with 1.5 times  $I_N$
- From 7 to 20 seconds with 2 times  $I_N$

$I_N$  = maximum value of current shown on the name plate

The 3-phase versions need external protection (rapid disconnect magnetic overload cut-out) with intervention time calibrated to:

- Less than 10 seconds with 5 times  $I_N$
- Less than 10 minutes with 1.5 times  $I_N$

$I_N$  = maximum value of current shown on the name plate

The installation of a differential switch is highly recommended

### 10.3 Checking the Direction of Rotation (Three Phase only)

After connecting the power supply, the direction of rotation can be inverted in the three phase versions; in this case performance will be significantly lower than the nominal values **and will cause substantial damage to the Filterpump if run in the wrong direction for more than a few seconds and will invalidate any guarantee.**

To verify a correct connection, proceed as follows:

1. Start the electrical pump before it is installed. By reaction, it must tend to rotate in a counter clockwise direction as viewed from above. CAUTION! This operation will be performed dry and must not last more than a few seconds.
2. With the electrical pump operating, installed and submerged in the fluid to be pumped, use a clamp meter to measure the current absorbed. If the rotation is incorrect, you will see values about double those indicated on the name plate. To correct the problem just reverse two of the phases. Do not run the pump for more than a few seconds or serious damage may occur that will invalidate any guarantee

## 11. **INSTALLATION** (as per EEC 98/37 p. 1.7.4.a; EN 292-2 p.5.1.1b)

### **WARNING**

***TO LIFT OR LOWER THE FILTERPUMP, USE A ROPE FIXED TO THE EYELETS; NEVER USE THE ELECTRIC POWER CABLE.***



Before beginning to work on the electrical pump make sure that you have disconnected the power supply from the power supply mains and that it cannot be accidentally reconnected.

The installation of the electrical pump can involve a certain amount of complexity. For this reason, it must be performed by competent and authorised installers.

### **The Delivery Pipe**

The diameter of the delivery pipe depends on the flow rate and pressure available at the points of use. For installations with long lengths of delivery pipe, friction loss can be reduced by using a pipe diameter larger than the discharge outlet of the pump. It is advisable to install a check valve after the discharge outlet to avoid dangerous water hammers in the event the electrical pump should stop suddenly. Do not use excessive force when screwing the pipe to the discharge outlet in order to avoid damage. The electrical pump can be installed for use with either a metal pipe ( which can be used to support the pump) or flexible tubing. In the latter case the electrical pump must be supported by a cable made of a material with long lasting resistance, passing through the eyelets at the top of the pump. Fix the power cable to the delivery pipe using suitable straps.

**CAUTION!** Do not underestimate the risk of drowning if the installation must be performed in a well of a certain depth. Make sure there is no danger of toxic vapours or harmful gases in the work atmosphere.

### 11.1 **Fixed Installation**

11.1.1 The Filterpump may be installed upright or horizontally although the self-cleaning filter will work better in the upright position

11.1.2 The Filterpump should be fully submerged if possible although this is not necessary except for frost protection. The Filterpump will operate continuously if at least 350mm of the filter unit and suction end of the pump are submerged in water at a temperature of less than 40°C.

There must be a gap of at least 100mm around and underneath the filter unit, although there is no need for a gap under the Filterpump when operated in the upright position if there is a flow of fluid past the filter pump to take detritus away from the screen (e.g. when installing in a flowing river or flume the filter unit at the suction end of the Filterpump) at all times to allow solid particles to fall or be washed clear of the filter screen. Due allowance must be made to allow for any build-up of solids underneath the filter and any detritus, sludge etc must be removed from time to time to ensure this does not come within 100mm of the filter.

When lowering the Filterpump into a well or tank, ensure that it is at least 100mm above the bottom.

Be careful with the power cable when lowering the Filterpump. It is advisable to tie the power cable to the delivery pipe every two or three metres.

11.1.3.1 When positioning the Filterpump, observe the minimum required distances (fig. 2) from walls, from the sides of the drain, tank or other location, so as to allow functioning, use and maintenance operations in safe conditions (as per EN 292-2 p.5.5.1.b).

11.1.3.2 It is recommended that G 1¼" rigid pipes (metal or plastic) be attached to the Filterpump with clamps of a suitable size.

11.1.3.3 Anchor the pipes to the edge of the basin or tank with a pipe clamping bracket.

11.1.3.4 If there is the need to install a non-return valve onto the delivery pipes, make sure it is placed away from the Filterpump filter screen to avoid priming problems when first starting or after emptying.

**11.2 Temporary Installation (for Temporary Use)**

- 11.2.1.1 The Filterpump may be installed upright or horizontally. (As above)  
The Filterpump should be fully submerged if possible (as above) but it will operate continuously if at least 350mm of the filter unit and suction end of the pump are submerged in water at a temperature of less than 40°C.
- 11.2.1.2 There must be a gap of at least 100mm around and underneath the filter unit, although there is no need for a gap under the Filterpump when operated in the upright position if there is a flow of fluid past the filter pump to take detritus away from the screen (e.g. when installing in a flowing river or flume at the suction end of the Filterpump) at all times to allow solid particles to fall or be washed clear of the filter screen. Due allowance must be made to allow for any build-up of solids underneath the filter and any detritus, sludge etc must be removed from time to time to ensure this does not come within 100mm of the filter.
- 11.2.1.3 When lowering the Filterpump into a well or tank, ensure that it is at least 100mm above the bottom.
- 11.2.1.4 Be careful with the power cable when lowering the Filterpump. It is advisable to tie the power cable to the delivery pipe every two or three metres.
- 11.2.1.5 When positioning the Filterpump, observe the minimum required distances (fig. 2) from walls, from the sides of the drain, tank or other location, so as to allow functioning, use and maintenance operations in safe conditions (as per EN 292-2 p.5.5.1.b).
- 11.2.1.6 It is recommended that G 1¼" rigid pipes (metal or plastic) be attached to the Filterpump with clamps of a suitable size.
- 11.2.1.7 If there is the need to install a non-return valve onto the delivery pipes, make sure it is placed away from the Filterpump to avoid priming problems when first starting or after emptying.

**12 ASSEMBLY AND DISASSEMBLY (as per EEC 98/37 p.1.7.4.a).**

The basic Filterpump has no separate parts or accessories, so no assembly is required for installation. If the Filterpump is to be used with the Rotorflush Valve Control System, the assembly instructions provided with the Control Valve system must be followed.

**The user must not attempt to disassemble any other component not covered in these instructions and should contact Rotorflush Filters for advice if any further disassembly is required.**

**FAILURE TO COMPLY WITH THIS RULE RENDERS THE GUARANTEE INVALID.**

**13. Adjusting and Registering**

(as per EEC 98/37 p.1.7.4.a; EN 292-2 p.5.5.1.d)

The only thing that needs checking once installation is complete is the length of the cable with float (in versions that have one) with respect to the minimum and maximum water level .

**14. USE AND START-UP** (as per EEC 98/37 p.1.7.4.a; EN 292-2 p. 5.5.1.d)

The water level must never be lower than the filter screen, even when the pump is not being used. If you fail to observe this, the Filterpump will run out of water and you will have great difficulty starting the Filterpump again.

**14.1 Starting**

Never switch on the Filterpump until it is placed and installed in its final operational position. It is possible to have leakage of the Filterpump oil into the pumped liquid; however, this is not harmful to health.

**14.2 Version With Floating Switch**

To start up the Filterpump, connect the plug and/or turn on the switch. The Filterpump will start automatically as soon as the water level, regulated by the floating switch, reaches the minimum level. The performance of the floating switch has been designed by the manufacturer to assure a minimum immersion level in the OFF position.

**14.3 Version Without Floating Switch**

To start up the Filterpump, connect the plug and/or turn on the switch. When the water level reaches the minimum level (fig. 2), disconnect the plug and/or turn off the switch.

**15. MAINTENANCE AND REPAIRS** (as per EEC 98/37 p.1.6; EN 292-2 p.5.5.1.e)


**BEFORE CARRYING OUT ANY MAINTENANCE OPERATIONS,  
DISCONNECT THE PLUG AND/OR SWITCH OFF.  
FOR ANY REPAIR JOBS DURING THE GUARANTEE PERIOD, THE USER  
MUST CONTACT ROTORFLUSH FILTERS**



**FAILURE TO OBSERVE THIS RULE RENDERS THE GUARANTEE INVALID.  
AFTER THE GUARANTEE PERIOD ALL MAINTENANCE OPERATIONS**

To ensure correct functioning and long life of the Filterpump, the Rotorflush filter unit should be inspected and cleaned every two months. The amount of cleaning required will depend on the liquid being pumped in some instances more frequent manual cleaning of the filter screen may be required, for example where biological growth occurs on the filter screen or oily/fatty deposits are found to build up on the filter screen) This is the only maintenance required by the Filterpump.

Check the condition of the electric power cable; if it is damaged, contact the dealer or Rotorflush Filters to have it replaced.

**Troubleshooting**
**TYPE OF FAULT: The pump does not work (the motor does not turn over)**

| CAUSE   | REMEDY                                   |
|---|--|
| No electric power   | Check the contactor on the electric line |
| Plug not inserted   | Check power connection to the line       |
| Automatic switch has tripped                              | Reset the switch and check the cause     |
| Float blocked   | Check that the float reached ON level    |
| Thermal protection has tripped (single phase) up to 1.1kW | This resets automatically                |
| Protection fuses are burnt out (three-phase)              | Replace the fuses with same type         |
| Faulty motor or capacitor                                 | Contact Rotorflush Filters               |

**TYPE OF FAULT: The pump does not work (the motor turns over)**

| CAUSE   | REMEDY   |
|---|--|
| Intake filter blocked                                     | Cleans the filter  |
| Non-return valve blocked                                  | Clean the valve and check its operation                            |
| The pump does not start up                                | Check minimum water level<br>Check function of delivery gate valve |
| Hole in filter screen causing pump to block with detritus | Return to Rotorflush Filters for repairs                           |

**TYPE OF FAULT: The pump works at a low flow rate**

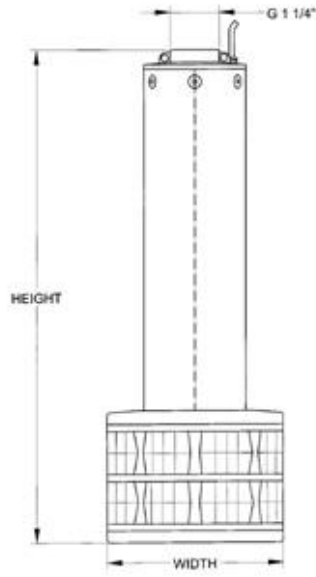
| CAUSE                       | REMEDY  |
|-----------------------------|---|
| Dirty deliver pipe          | Clean pipe  |
| Clogged filter screen       | Clean, if continues to be a problem, fit control valve (available from Rotorflush Filters)    |
| Dirty Impellers             | Check filter screen for damage. If damaged contact Rotorflush Filters for replacement screen) |
| Non-return valve blocked    | Clean the valve and check its operation   |
| Water level too low         | Switch off the pump   |
| Wrong direction of rotation | Check the direction of rotation (three-phase only, section 10.3)                              |
| Wrong supply voltage        | Feed the pump with the voltage indicated on the rating plate                                  |

**TYPE OF FAULT: The pump stops after brief periods of operation (tripping the thermal protection)**

| CAUSE                       | REMEDY   |
|-----------------------------|--|
| Liquid temperature too high | The temperature exceeds the technical limits of the pump |
| Internal defect             | Contact Rotorflush Filters                               |

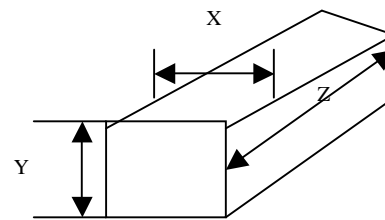
16. **TECHNICAL INFORMATION**

16.1 **Diagram of Filterpump Dimensions, Packing and Weights**



| MODEL | DIMENSION S (mm) |     | PACKING (mm) |     |     | WEIGHT (Kg)  |             |
|-------|------------------|-----|--------------|-----|-----|--------------|-------------|
|       | H                | W   | X            | Y   | Z   | Single Phase | Three phase |
| N9316 | 650              | 215 | 300          | 260 | 980 | 20.7         | -           |
| N9416 | 730              | 215 | 300          | 260 | 980 | 23.7         | 21.2        |
| N9516 | 760              | 215 | 300          | 260 | 980 | 25.7         | 24.2        |
| N9616 | 790              | 215 | 300          | 260 | 980 | 26.2         | 24.7        |
| N9716 | 820              | 215 | 300          | 260 | 980 | -            | 26.7        |
| N9816 | 850              | 215 | 300          | 260 | 980 | -            | 27.2        |
| N9916 | 880              | 215 | 300          | 260 | 980 | -            | 27.7        |

Fig1



16.2 **Diagram for Installation with Minimum Functional Distances**

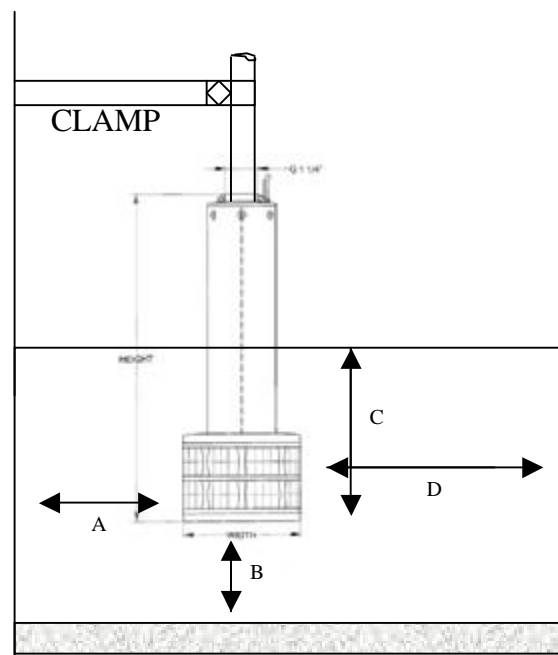




Fig 2

- A 100mm min gap to side of tank
- B 100mm min gap to top of sediment or detritus at bottom of tank
- C With automatic float switch:  
350mm minimum immersion from bottom of filter.  
Without automatic float switch:  
130mm minimum immersion from bottom of filter.
- D If used with automatic float switch allow 600mm min gap to side of tank

**16.3 Rating Plate Example**

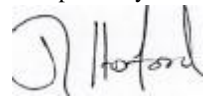
|  <b>ROTORFLUSH FILTERS</b><br>Langmoor Manor<br>Charmouth DT6 6BU UK<br>+44 (0)1297 560229 |      |        |        |  |            |
|---|------|--------|--------|---|------------|
| TYPE  |      | (1)    | (2)    |   |            |
| Q   | (3)  | l/min. | H      | (4)   | Hmax (5) m |
| V~  | (6)  |        |        | Hmin (7) m  |            |
| P <sub>2</sub>  | (8)  | kW     | HP     | (9)   | Hz (10)    |
| P <sub>1</sub>  | (12) | kW     | Phase  | (13)  | Min (14)   |
| MF  | (15) | Vc     | (16)   | IP  | (17)       |
| Ins.C. F  | (19) | S1     | Weight | (20)  | Kg         |
|   |      | P/N    |        | (21)  |            |

- |      |                   |  |
|------|-------------------|--|
| (1)  | Model             |  |
| (2)  | Serial Number     |  |
| (3)  | "Q"               | Min and max capacity of duty point                   |
| (4)  | "H"               | Total head in relation to min and max capacity       |
| (5)  | "Hmax"            | Max total head (usually corresponds to the shut-off) |
| (6)  | "V~"              | Nominal voltage                                      |
| (7)  | "Hmin"            | Min total head                                       |
| (8)  | "P <sub>2</sub> " | Nominal power of the motor (shaft power)             |
| (9)  | "HP"              | Nominal horse power of the motor                     |
| (10) | "Hz"              | Frequency  |
| (11) | "A"               | Nominal current                                      |
| (12) | "P <sub>1</sub> " | Input power  |
| (13) | "Phase"           | Type of motor (single or three phase)                |
| (14) | "min-1"           | Revolution speed                                     |
| (15) | "[F]"             | Capacitor data (single phase only)                   |
| (16) | "Vc"              | Capacitor voltage                                    |
| (17) | "IP"              | Protection classification                            |
| (18) | " <u>s</u> "      | Max operational depth                                |
|      | m                 |  |
| (19) | "Ins. C. F S1"    | Insulation class and duty type                       |
| (20) | "Weight"          | Weight   |
| (21) | "P/N"             | Part number  |

- 17. INFORMATION ON AIR-BORNE NOISE** (as per EEC 89/392 p. 1.7.4.f)  
The weighted sound pressure level A produced by the Filterpump does not exceed the value of 70 dB(A).
- 18. WASTE DISPOSAL**  
Before scrapping the Filterpump, make sure the lubricating oil is separated from the other components.  
Do not dump lubricating oil in the environment. It must be disposed of properly.

**DECLARATION OF CONFORMITY**

We, **ROTORFLUSH FILTERS LIMITED**, declare under our own responsibility that our products Filterpump N9316, N9416, N9516, N9616, N9716, N9816 and N9916 conform to the Machinery Directive 89/392/CEE as modified by Directives 91/368/CEE, 93/44/CEE, 93/68/CEE, to the Low Tension Directive 73/23/CEE, as modified by Directive 93/68/CEE and to the Electromagnetic Compatibility Directive 89/336/CEE as modified by Directive 93/68/CEE.



**J Hosford**  
**Proprietor Rotorflush Filters**



**USE AND MAINTENANCE  
INSTRUCTION MANUAL  
for  
ROTORFLUSH FILTERPUMPS  
Models N9316-N9916**

**For three phase pumps it is imperative that electrical connections are made so that the impellers rotate in the correct direction. If the pumps are run in the wrong direction for more than a few seconds serious damage may result which will invalidate the guarantee.**

**Read page 7 paragraph 10.3 before installation for the method of checking correct direction of rotation.**